

# FOR SALE

101 San Marcos St, Dripping Springs, TX 78620

Offering Memorandum



COMPASS

Steven Owen | 512.921.5220 | steven.owen@compass.com



101 SAN MARCOS STREET

290

HIGHWAY 290

HIGHWAY 290

290

HIGHWAY 12

## CONTENTS

Pg 3..... Executive Summary

Pg 4 - 6..... Location Overview

Pg 7 - 8..... Location Demographics

Pg 19 - 11.... 290 HWY Projects

Pg 12 ..... Site Plan

Pg 13 -14 .... Property Overview

Pg 15..... Austin Hi-lights

Pg 16..... Contact

# DRIPPING SPRINGS

---

## TEXAS



COMPASS



# EXECUTIVE SUMMARY

Prime Downtown Dripping Springs Opportunity!

101 San Marcos anchors the Historic Mercer Street District with a 0.34-acre corner lot and

3,628 SF of retail/warehouse improvements.

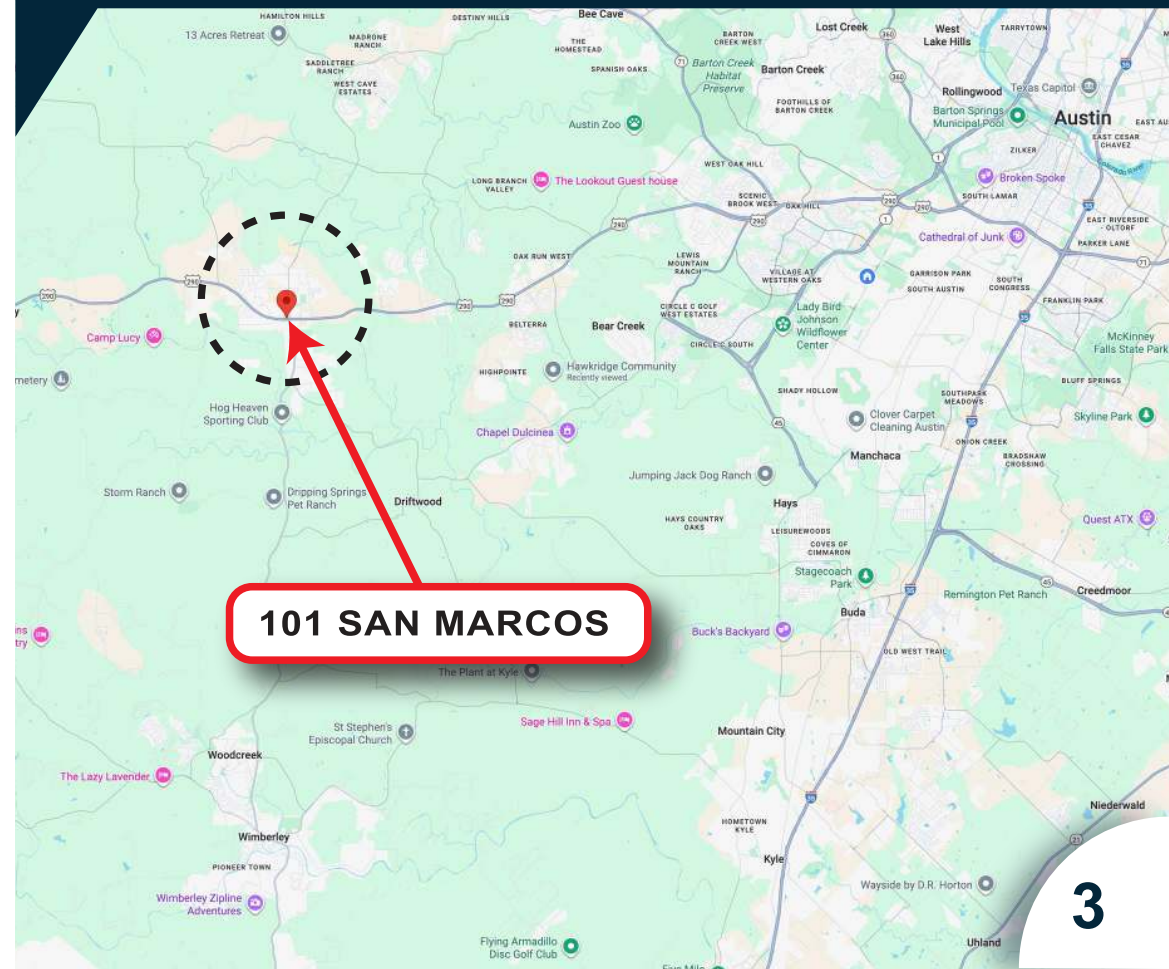
Ideal for restaurant, retail, or office use, the site offers unmatched visibility, walkability, and

growth potential—making it a rare investment in one of Texas' fastest-growing markets.

## PROPERTY SUMMARY

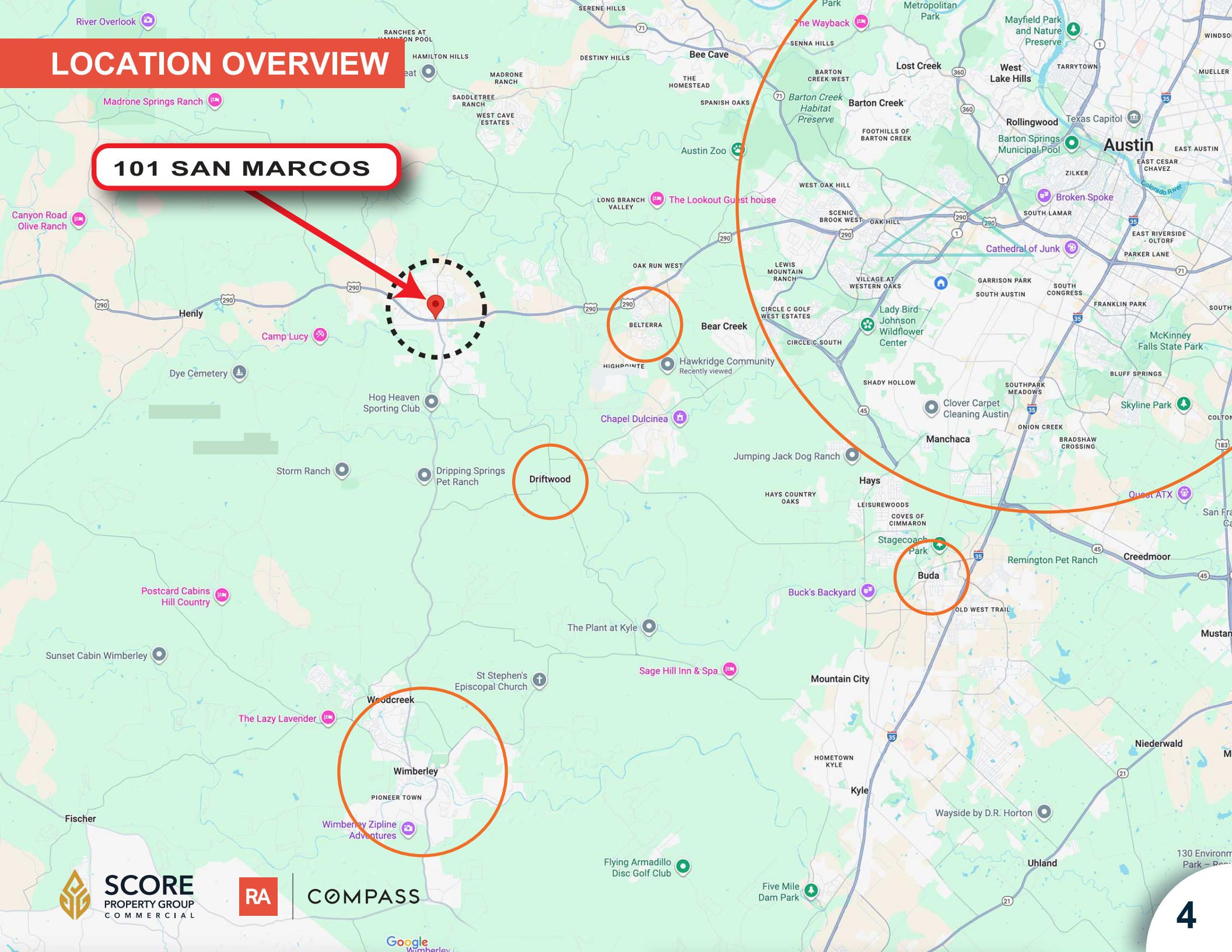
LOCATION:	101 San Marcos
SITE AREA:	0.344 Acres
FRONTAGE:	San Marcos St & Wallace St
ZONING:	CS-HO
IMPERVIOUS COVER:	-
TRAFFIC:	-
GROWTH RATE:	19.71% (4-years)
AVE HH INCOME (5-Miles):	\$162,731 (5-miles)
UTILITIES:	City Water & Wastewater
FLOODZONE:	-

1. Prime Historic Mercer Street District
2. 0.344 Acres
3. 3,628 SF
4. Massive Population Growth Area
5. Major Highway Infrastructure Projects Nearby



# LOCATION OVERVIEW

**101 SAN MARCOS**

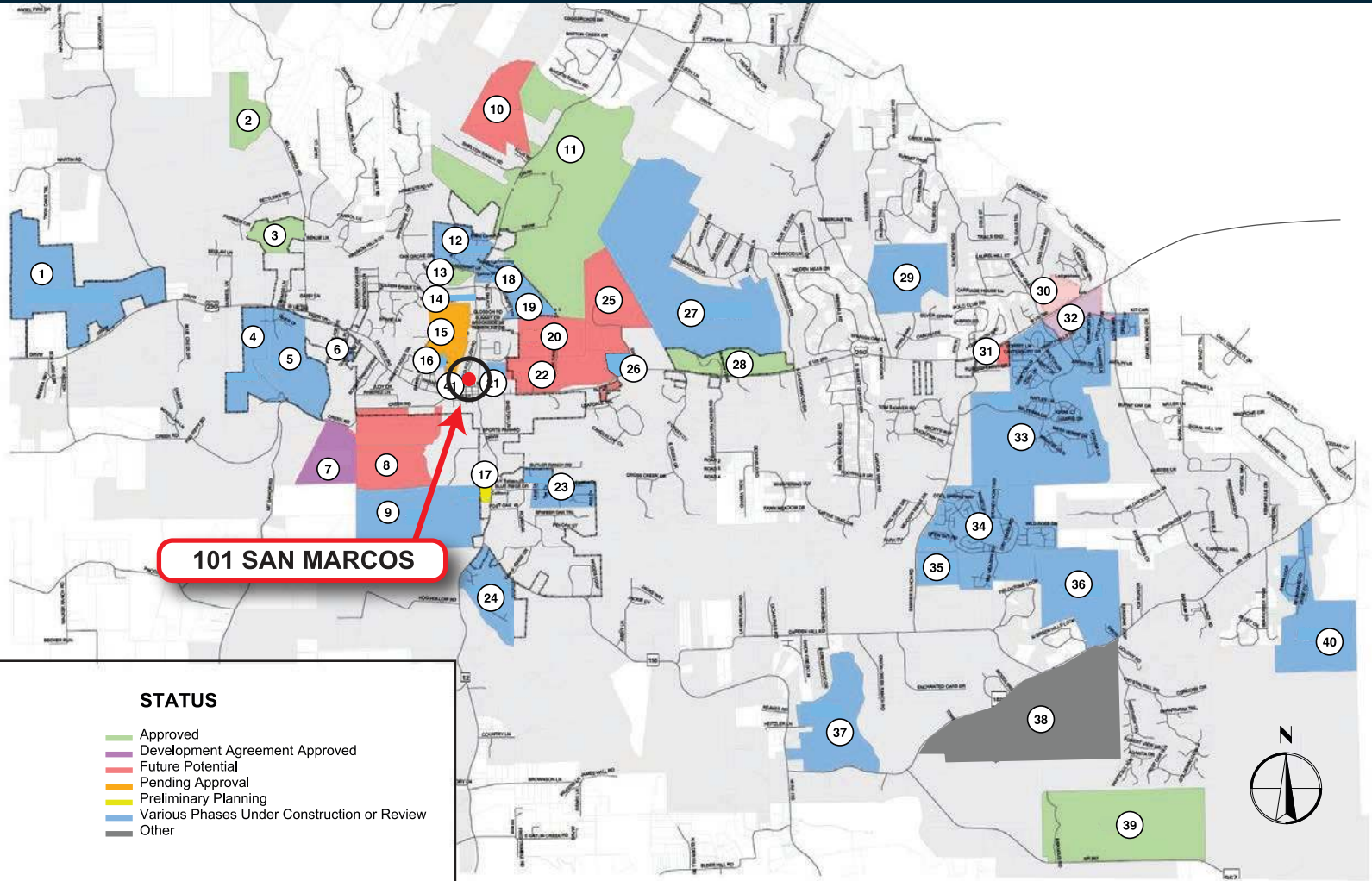


# LOCATION OVERVIEW

## Proposed Development by 2040

### LEGEND

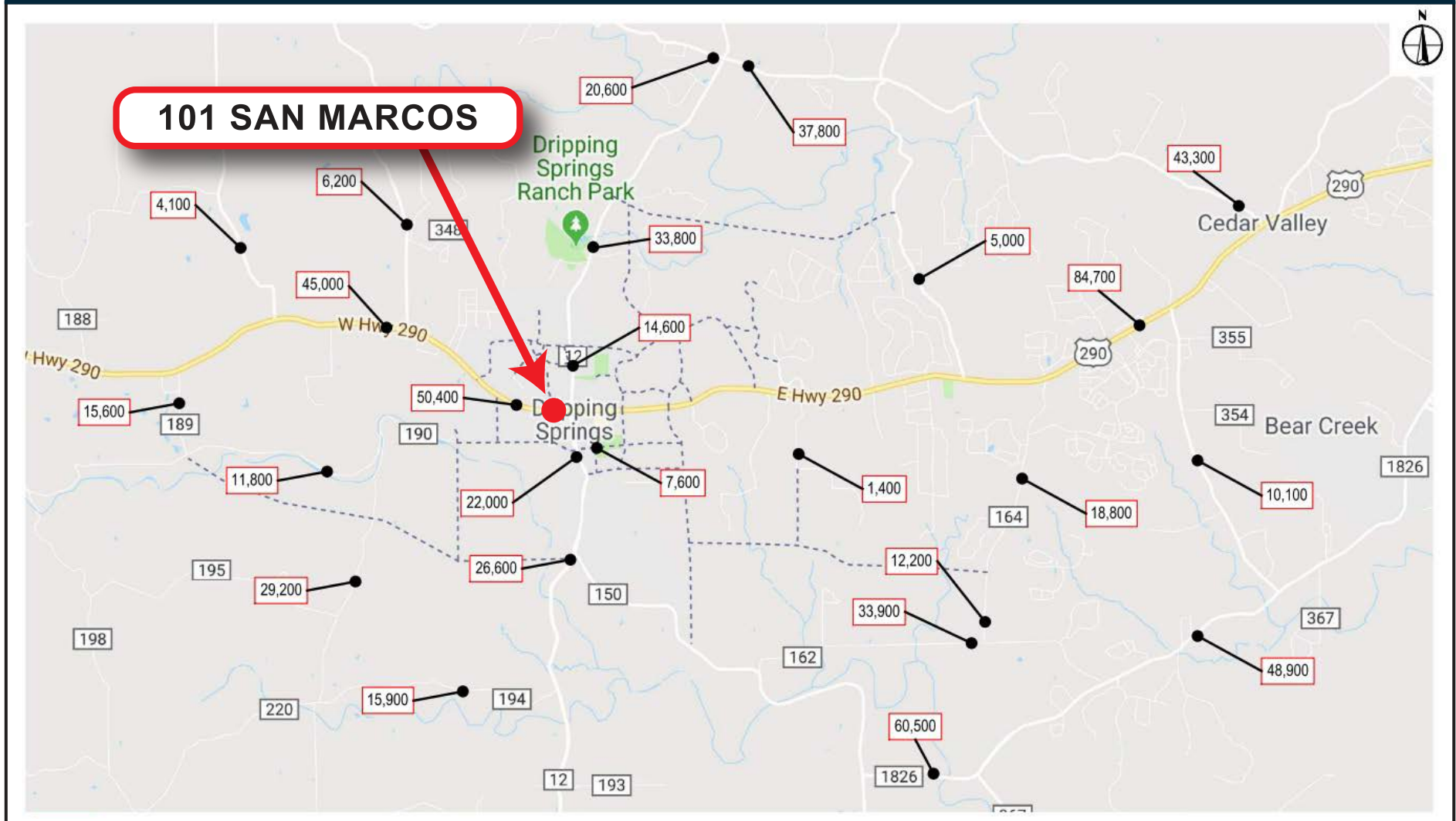
1. Westwood PDD # 7
2. Bella Vista
3. Esperanza
4. Bunker Ranch
5. Arrowhead
6. Gateway 26 Doors
7. Carter Ranch
8. al-Rashid Tract
9. Caliterra
10. Springs at Barton Creek
11. Double L Ranch
12. Harrison Hills
13. Cortaro
14. Hill Country Senior Apartments
15. Heritage
16. Burrows
17. Farmstead at Caliterra
18. Founders Ridge
19. Legacy Trails, Phase 3
20. Scott Tract
21. Heritage
22. Cannon Tract
23. Butler Ranch Estates
24. Howard Ranch
25. Cynosure
26. Blue Blazes
27. Headwaters at Barton Creek
28. Headwaters PDD # 6
29. Saratoga Hills
30. Ledgestone
31. JM Assets
32. Belterra Commercial
33. Belterra
34. Highpoint
35. Burba Ranch
36. Parten Tract
37. Driftwood
38. Rim Rock
39. Rutherford Ranch
40. Reunion Ranch
41. Dripping Springs Town Center



### STATUS

- Approved
- Development Agreement Approved
- Future Potential
- Pending Approval
- Preliminary Planning
- Various Phases Under Construction or Review
- Other

# AREA LOCATION MAP with 2040 forecasted daily traffic volumes



# LOCATION DEMOGRAPHICS

101 SAN MARCOS

## DEMOGRAPHICS

3 MILES 5 MILES 7MILES

### POPULATION BY YEAR

Population (4/1/2000)	4,766	6,453	11,515
Population (4/1/2010)	6,853	9,448	21,243
Population (4/1/2020)	9,996	13,311	35,345
Population (1/1/2024)	11,966	15,794	41,353
Population (1/1/2029)	13,196	17,425	45,449
Percent Growth (2024/2020)	19.71	18.65	17
Percent Forecast (2029/2024)	10.28	10.33	9.9

### GENERAL INCOME CHARACTERISTICS

Total Household Income (\$)	658,476,209	916,340,005	2,464,475,576
Median Household Income (\$)	121,447	123,916	139,982
Average Household Income (\$)	154,391	162,731	171,144
Per Capita Income (\$)	55,169	58,124	59,648

### CONSUMER EXPENDITURES

Total Annual Expenditures (\$000)	374,588.10	502,675.10	1,338,182.80
-----------------------------------	------------	------------	--------------

# LOCATION DEMOGRAPHICS

## AREA OVERVIEW

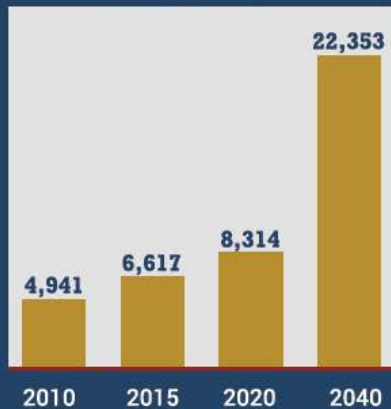
The study area for the Dripping Springs Transportation Master Plan includes the City Limits and its extraterritorial jurisdiction (ETJ).

## DEMOGRAPHICS

Dripping Springs' unique location situated at the outskirts of Austin within the Hill Country allows for ideal access to both urban and natural environments. It has experienced high growth in recent years, with many newly built and proposed residential and commercial developments in the area. Over 40 new developments are planned for Dripping Springs and the surrounding area in the near future.

### EMPLOYMENT GROWTH

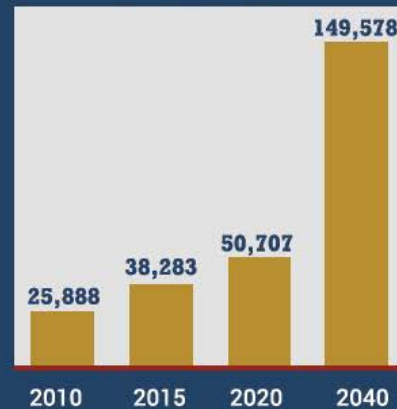
Dripping Springs ETJ



Source: CAMPO 2040 Travel Demand Model

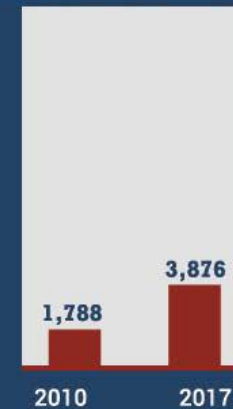
### POPULATION GROWTH

Dripping Springs ETJ



Source: CAMPO 2040 Travel Demand Model

Dripping Springs City Limits



Source: U.S. Census Bureau

# 290 HIGHWAY PROJECTS



THE 290 PROJECTS will transform a 4 lane road into a 12 lane highway, eliminating 24 stoplights between the Dripping Springs and downtown Austin.

# 290 HIGHWAY PROJECTS

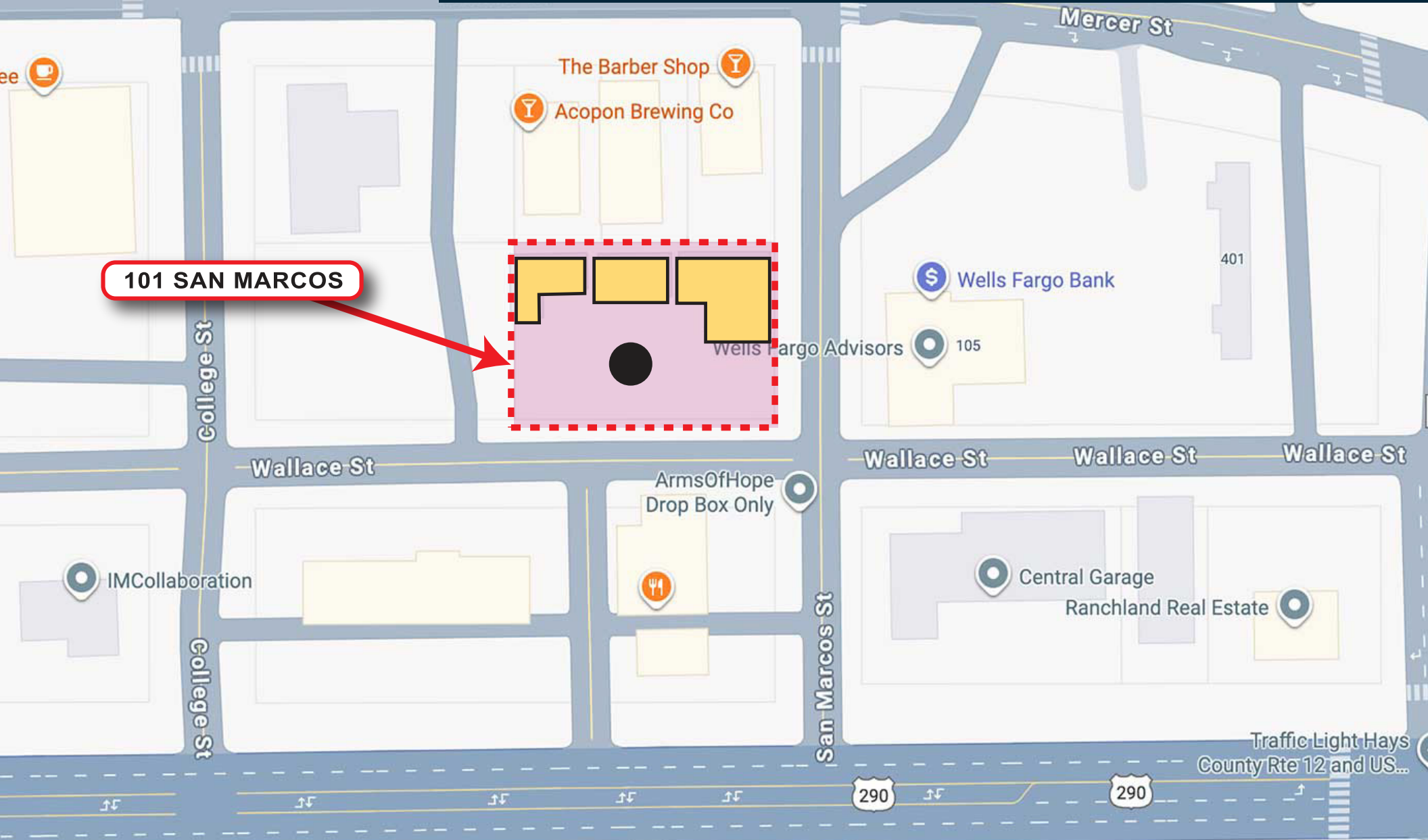


## 290 HIGHWAY PROJECTS

- TxDOT is building an upgraded, state-of-the-art roadway consisting of 2-to-3 non-stop US 290 main lanes for through traffic in each direction from William Canon past Ranch Road 12, eliminating 24 stops between stoplights and downtown Austin.
- An overpass for the US 290 main lanes over William Cannon Drive will be built, along with new flyovers between US 290 and SH 71. At this location, the US 290 main lanes will be lowered under SH 71.
- New intersections will be constructed along US 290 at Convict Hill Road, RM 1826, Scenic Brook Drive and Circle Drive (South View Road) where the highway will go below the existing ground level and the cross street will remain at ground level.
- U-turns will be constructed at intersections along US 290 and SH 71 to allow vehicles traveling on frontage roads to access the opposite direction frontage road.
- Along SH 71, the flyover ramps will extend past Scenic Brook Drive where the main lanes will transition to a 5-lane (three lanes northbound, two lanes southbound) highway with U-turns for local access
- Significant bicycle and pedestrian accommodations will be built along the entire corridor, including 14 miles of shared-use path and 1 1/2 miles of sidewalks.
- An off site storm-water detention pond will be built upstream of Williamson Creek near Old Bee Caves Road and Sunset Ridge, and multiple water quality treatment ponds will be built within the corridor.
- New landscaping, tree plantings and corridor aesthetics will be part of the construction plan.

# SITE PLAN

## 101 San Marcos St, Dripping Springs, TX 78620



COMPASS

# PROPERTY OVERVIEW



# PROPERTY OVERVIEW



# AUSTIN TEXAS

**HAYS COUNTY #1**  
FASTEST GROWING  
COUNTY IN THE USA



### DOWNTOWN BY THE NUMBERS

15,360 residents	130,841 employees	7,190,393 square feet under construction	14,313,851 square feet of planned space

2.7M annual transit ridership	150+ public art installations	10,324 residential units	14,700+ hotel rooms	150 acres of parkland	15 miles of downtown area trails	190 historic locations

	<b>#1 Top City in the WORLD for TECH</b> <small>(Savills)</small>	<b>#1 Best State Capital to LIVE in</b> <small>(WalletHub)</small>	
<b>#1 Top Place to LIVE in the USA</b> <small>(U.S. News &amp; World Reports)</small>		<b>#3 Best Place to START a CAREER</b> <small>(WalletHub)</small>	

# CONTACT INFORMATION



**Steven Owen**

(512) 921-5220

[steven.owen@compass.com](mailto:steven.owen@compass.com)

COMPASS

"Realty Austin has been engaged by the owner of the properties to market them for sale. This Confidential Offering Memorandum ("COM") is solely for consideration of the opportunity to acquire the commercial property described herein, and may be used only as stated herein and shall not be used for any other purpose, or in any other manner, without the prior written authorization or consent of Realty Austin. Information pertaining to the properties described herein has been obtained from sources other than Realty Austin. Neither Realty Austin nor their respective employees, officers, directors, equity holders, and/or agents makes any representation or warranties, express or implied, as to the accuracy or completeness of such information. Any and all reference to expenses, income, square footage, age, and any other property specific information is approximate. Any estimates, assumptions, opinions, contained herein are projections only and used for illustrative purposes and may be based on assumptions or due diligence criteria different from that used by a purchaser. Realty Austin and owner disclaim any liability that may be based upon or related to the information contained herein. Prospective purchasers should conduct their own independent investigation and rely on those results. The information contained herein is subject to change. The Property may be withdrawn without notice.

RA

By Accepting this COM, you agree that: 1) All information contained herein, and all information received or may hereafter receive whether orally or in writing is strictly confidential. 2.) you will not copy or reproduce all or any part of this COM. 3.) upon request by Realty Austin you will return or certify destruction of this COM. 4.) you and all related affiliates, officers, employees, representatives, agents and principals hereby release and agree to indemnify and hold harmless Realty Austin and all of its agents, representatives, employees, officers and affiliates."